

Summary Prospectus

Calamos Focus Growth Fund

CALAMOS®

NASDAQ Symbol: CBCAX – Class A CBCBX – Class B CBXCX – Class C

Before you invest, you may want to review the Fund's prospectus and statement of additional information, which contain more information about the Fund and its risks. You can find the Fund's prospectus, statement of additional information and other information about the Fund online at <http://fundinvestor.calamos.com/FundLit>. You can also get this information at no cost by calling 800.582.6959 or by sending an e-mail request to prospectus@calamos.com. The current prospectus and statement of additional information, both dated March 1, 2014, as amended April 30, 2014 and November 13, 2014 (and as each may be further amended or supplemented), and the financial statements included in the Fund's most recent reports to shareholders, dated April 30, 2014 and October 31, 2013, are incorporated by reference into this summary prospectus.

Investment Objective

Calamos Focus Growth Fund's investment objective is long-term capital growth.

Fees and Expenses of the Fund

The following table describes the fees and expenses that you may pay if you buy and hold shares of the Fund. You may qualify for sales charge discounts if you and your family invest, or agree to invest in the future, at least \$50,000 in Calamos Funds. More information about these and other discounts is available from your financial professional and under "Fund Facts — What classes of shares do the Funds offer?" on page 88 of the Fund's prospectus and "Share Classes and Pricing of Shares" on page 59 of the Fund's statement of additional information.

| Shareholder Fees (fees paid directly from your investment): | | | |
|--|---------|---------|---------|
| | CLASS A | CLASS B | CLASS C |
| Maximum Sales Charge (Load) Imposed on Purchases (as a percentage of offering price) | 4.75% | None | None |
| Maximum Deferred Sales Charge (Load) (as a percentage of the lesser of the redemption price or offering price) | None | 5.00% | 1.00% |

| Annual Fund Operating Expenses (expenses that you pay each year as a percentage of the value of your investment): | | | |
|--|---------|---------|---------|
| | CLASS A | CLASS B | CLASS C |
| Management Fees | 1.00% | 1.00% | 1.00% |
| Distribution and/or Service Fees (12b-1) | 0.25% | 1.00% | 1.00% |
| Other Expenses | 0.40% | 0.40% | 0.40% |
| Total Annual Operating Expenses | 1.65% | 2.40% | 2.40% |
| Expense Reimbursement ¹ | (0.50)% | (0.50)% | (0.50)% |
| Total Annual Operating Expenses After Reimbursement | 1.15% | 1.90% | 1.90% |

¹ The Fund's investment advisor has contractually agreed to reimburse Fund expenses through March 31, 2015 to the extent necessary so that Total Annual Fund Operating Expenses (excluding taxes, interest, short interest, short dividend expenses, brokerage commissions, acquired fund fees and expenses, and extraordinary expenses, if any) of Class A, Class B and Class C are limited to 1.15%, 1.90% and 1.90% of average net assets, respectively.

Example

This example is intended to help you compare the cost of investing in the Fund with the cost of investing in other mutual funds. The example assumes that you invest \$10,000 in the Fund for the time periods indicated and then either redeem or do not redeem your shares at the end of the reflected time periods. The example also assumes that your investment has a 5% return each year, that all dividends and capital gain distributions are reinvested, that you pay a maximum initial or contingent deferred sales charge and that the Fund's operating expenses remain the same (except for the ten-year amounts for Class B shares, which reflect the conversion of Class B shares to Class A shares in years nine and ten). Although your actual performance and costs may be higher or lower, based on these assumptions, your costs would be:

| | REDEMPTION | | | NO REDEMPTION | | |
|----------|------------|-------|-------|---------------|-------|-------|
| | A | B | C | A | B | C |
| 1 Year | 587 | 693 | 293 | 587 | 193 | 193 |
| 3 Years | 921 | 996 | 696 | 921 | 696 | 696 |
| 5 Years | 1,281 | 1,431 | 1,231 | 1,281 | 1,231 | 1,231 |
| 10 Years | 2,293 | 2,508 | 2,695 | 2,293 | 2,508 | 2,695 |

Calamos Focus Growth Fund

Portfolio Turnover

The Fund pays transaction costs, such as commissions, when it buys and sells securities (or “turns over” its portfolio). A higher portfolio turnover rate may indicate higher transaction costs and may result in higher taxes when Fund shares are held in a taxable account. These costs, which are not reflected in the annual fund operating expenses or in the example, affect the Fund’s performance. During the most recent fiscal year, the Fund’s portfolio turnover rate was 89.0% of the average value of its portfolio.

Principal Investment Strategies

The Fund invests primarily in equity securities issued by U.S. companies. Under normal market conditions, the Fund invests at least 80% of its net assets (plus any borrowings) in “Blue Chip” companies. For this purpose, a Blue Chip company is one whose stock is included in the Standard & Poor’s 500 Stock Index or the Dow Jones Industrial Average or a company with a market capitalization of at least \$2 billion, and that the Fund’s investment adviser believes is well established, well known and financially viable (usually with at least four consecutive quarters of as-reported earnings, excluding discontinued operations and extraordinary items). The Fund may invest up to 25% of its net assets in foreign securities.

In pursuing its investment objective, the Fund seeks out a portfolio that opportunistically blends “Blue Chip” growth and value companies, with a bias toward companies that, in the investment adviser’s opinion, offer the best opportunities for growth. The Fund’s investment adviser typically considers the company’s financial soundness, earnings and cash flow forecast and quality of management. The Fund’s investment adviser seeks to lower the risks of investing in stocks by using a “top-down approach” of diversification by company, industry, sector, country and currency and focusing on macro-level investment themes.

Principal Risks

An investment in the Fund is subject to risks, and you could lose money on your investment in the Fund. There can be no assurance that the Fund will achieve its investment objective. The risks associated with an investment in the Fund can increase during times of significant market volatility. Your investment in the Fund is not a deposit in a bank and is not insured or guaranteed by the Federal Deposit Insurance Corporation or any other government agency. The principal risks of investing in the Fund include:

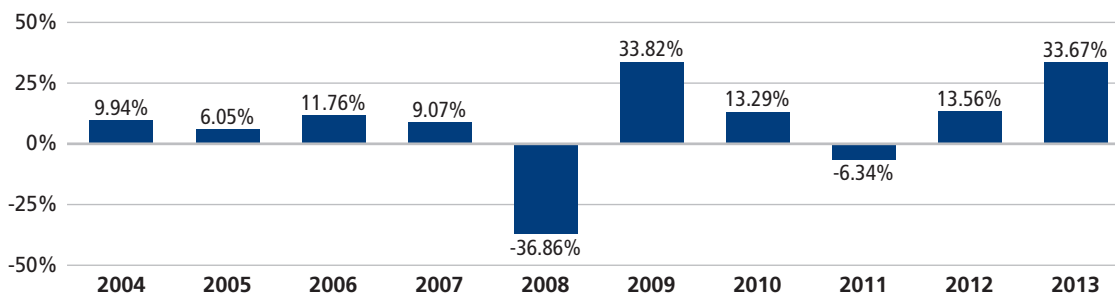
- **Equity Securities Risk** — The securities markets are volatile, and the market prices of the Fund’s securities may decline generally. The price of equity securities fluctuates based on changes in a company’s financial condition and overall market and economic conditions. If the market prices of the securities owned by the Fund fall, the value of your investment in the Fund will decline.
- **Growth Stock Risk** — Growth securities typically trade at higher multiples of current earnings than other securities and, therefore, may be more sensitive to changes in current or expected earnings than other equity securities and may be more volatile.
- **Value Stock Risk** — Value stocks involve the risk that they may never reach what the underlying funds’ investment adviser believes is their full market value. Additionally, because different types of stocks tend to shift in and out of favor depending on market conditions, a value fund’s performance may sometimes be higher or lower than that of other types of funds (such as those emphasizing growth stocks).
- **Foreign Securities Risk** — Risks associated with investing in foreign securities include fluctuations in the exchange rates of foreign currencies that may affect the U.S. dollar value of a security, the possibility of substantial price volatility as a result of political and economic instability in the foreign country, less public information about issuers of securities, different securities regulation, different accounting, auditing and financial reporting standards and less liquidity than in U.S. markets.
- **Forward Foreign Currency Contract Risk** — Forward foreign currency contracts are contractual agreements to purchase or sell a specified currency at a specified future date (or within a specified time period) at a price set at the time of the contract. The Fund may not fully benefit from, or may lose money on, forward foreign currency transactions if changes in currency exchange rates do not occur as anticipated or do not correspond accurately to changes in the value of the Fund’s holdings.
- **Portfolio Selection Risk** — The value of your investment may decrease if the investment adviser’s judgment about the attractiveness, value or market trends affecting a particular security, issuer, industry or sector or about market movements is incorrect.
- **Sector Risk** — To the extent the Fund invests a significant portion of its assets in a particular sector, a greater portion of the Fund’s performance may be effected by the general business and economic conditions effecting that sector. Each sector may share economic risk with the broader market, however there may be economic risks specific to each sector. As a result, returns from those sectors may trail returns from the overall stock market and it is possible that the Fund may underperform the broader market, or experience greater volatility.
- **Options Risk** — The Fund’s ability to close out its position as a purchaser or seller of an over-the-counter or exchange-listed put or call option is dependent, in part, upon the liquidity of the option market. There are significant differences between the securities and options markets that could result in an imperfect correlation among these markets, causing a given transaction not to achieve its objectives. The Fund’s ability to utilize options successfully will depend on the ability of the Fund’s investment adviser to predict pertinent market movements, which cannot be assured.

Calamos Focus Growth Fund

Performance

The following bar chart and table indicate the risks of investing in the Fund by showing changes in the Fund's performance from calendar year to calendar year and how the Fund's average annual total returns compare with those of a broad measure of market performance. All returns include the reinvestment of dividends and distributions. As always, please note that the Fund's past performance (before and after taxes) cannot predict how it will perform in the future. Updated performance information is available at no cost by visiting www.calamos.com or by calling 800.582.6959.

CLASS A ANNUAL TOTAL RETURN FOR YEARS ENDED 12.31



Best Quarter: 18.03% (6.30.09)

Worst Quarter: -21.92% (12.31.08)

Average Annual Total Returns as of 12.31.13

The following table shows how the Fund's average annual performance (before and after taxes) for the one-, five- and ten-year periods ended December 31, 2013 and since the Fund's inception compared with broad measures of market performance. "Since Inception" returns shown for each index are returns since the inception of the Fund's Class A shares, or since the nearest subsequent month end when comparative index data is available only for full monthly periods. The after-tax returns show the impact of assumed federal income taxes on an investment in the Fund. "Return After Taxes on Distributions" shows the effect of taxable distributions, but assumes that you still hold the Fund shares at the end of the period and so do not have any taxable gain or loss on your investment. "Return After Taxes on Distributions and Sale of Fund Shares" shows the effect of taxable distributions and any taxable gain or loss that would be realized if the Fund shares were purchased at the beginning and sold at the end of the specified period.

The after-tax returns are shown only for Class A shares, are calculated using the historical highest individual federal marginal income tax rates and do not reflect the impact of state and local taxes. Actual after-tax returns depend on an investor's tax situation and may differ from those shown, and the after-tax returns shown are not relevant to investors who hold their Fund shares through tax-deferred arrangements, such as 401(k) plans or individual retirement accounts. After-tax returns for classes other than Class A will vary from returns shown for Class A.

AVERAGE ANNUAL TOTAL RETURNS FOR THE PERIODS ENDED 12.31.13

| | INCEPTION DATE OF CLASS | ONE YEAR | FIVE YEAR | TEN YEAR | SINCE INCEPTION |
|---|-------------------------|----------|-----------|----------|-----------------|
| Class A | 12.1.03 | | | | |
| Load Adjusted Return Before Taxes | | 27.29% | 15.46% | 6.30% | 6.31% |
| Load Adjusted Return After Taxes on Distributions | | 27.26% | 15.43% | 6.17% | 6.17% |
| Load Adjusted Return After Taxes on Distributions and Sale of Fund Shares | | 15.47% | 12.50% | 5.11% | 5.12% |
| Class B | 12.1.03 | | | | |
| Load Adjusted Return Before Taxes | | 27.75% | 15.51% | 6.17% | 6.19% |
| Class C | 12.1.03 | | | | |
| Load Adjusted Return Before Taxes | | 31.73% | 15.72% | 6.02% | 6.03% |
| S&P 500 Index | | 32.39% | 17.94% | 7.41% | 7.77% |
| Russell 1000® Growth Index | | 33.48% | 20.39% | 7.83% | 8.00% |

The Russell 1000® Growth Index measures the performance of those companies in the Russell 1000® Index with higher price-to-book ratios and higher forecasted growth values. The Russell 1000® Growth Index is provided to show how the Fund's performance compares with the returns of an index of securities similar to those in which the Fund invests.

Calamos Focus Growth Fund

Investment Adviser

Calamos Advisors LLC

| PORTFOLIO MANAGER/FUND TITLE (IF APPLICABLE) | PORTFOLIO MANAGER EXPERIENCE IN THE FUND | PRIMARY TITLE WITH INVESTMENT ADVISER |
|--|--|--|
| John P. Calamos, Sr. (President, Chairman) | since Fund's inception | Chief Executive Officer, Global Co-CIO |
| Gary D. Black (Vice President) | 1.5 years | EVP, Global Co-CIO |
| Nick Niziolek | 1 year | SVP, Co-Portfolio Manager, Co-Head of Research |
| Jon Vacko | since Fund's inception | SVP, Co-Portfolio Manager, Co-Head of Research |
| Dennis Cogan | 1 year | SVP, Co-Portfolio Manager |
| John Hillenbrand | since Fund's inception | SVP, Co-Portfolio Manager |
| David Kalis | since November 13, 2014 | SVP, Co-Portfolio Manager |
| Steve Klouda | since Fund's inception | SVP, Co-Portfolio Manager |

Buying and Redeeming Fund Shares

Minimum Initial Investment

Classes A and C: \$2,500/\$500 for IRA

Minimum Additional Investment

Classes A and C: \$50

To Place Orders

Please contact your broker or other intermediary, or place your order directly:

Mail:

U.S. Bancorp Fund Services, LLC

P.O. Box 701

Milwaukee, WI 53201

Phone: 800.582.6959

Effective on July 31, 2009, the Funds no longer accept purchases of Class B shares from new or existing investors, except from existing investors through the reinvestment of dividends and/or capital gain distributions in Class B shares of the same Fund or by exchange of existing Class B shares held in another Fund.

Transaction Policies

The Funds' shares are redeemable. In general, investors may purchase, redeem, or exchange Fund shares on any day the New York Stock Exchange is open by written request (to the address noted above), by wire transfer, by telephone (at the number noted above), or through a financial intermediary. Orders to buy and redeem shares are processed at the next net asset value (share price or "NAV") to be calculated only on days when the New York Stock Exchange is open for regular trading.

Tax Information

The Funds' distributions may be taxable as ordinary income or capital gains, except when your investment is in an IRA, 401(k) or other tax-advantaged investment plan.

Payments to Broker-Dealers and Other Financial Intermediaries

If you purchase shares of the Fund through a broker-dealer or other financial intermediary (such as a bank), the Fund and its related companies may pay the intermediary for the sale of Fund shares and related services. These payments may create a conflict of interest by influencing the broker-dealer or other intermediary and your salesperson to recommend the Fund over another investment. Ask your salesperson or visit your financial intermediary's website for more information.

Click here to view the Fund's [statutory prospectus](#) or [statement of additional information](#).

CALAMOS®

2020 Calamos Court
Naperville, IL 60563-2787
800.582.6959
www.calamos.com
811-05443